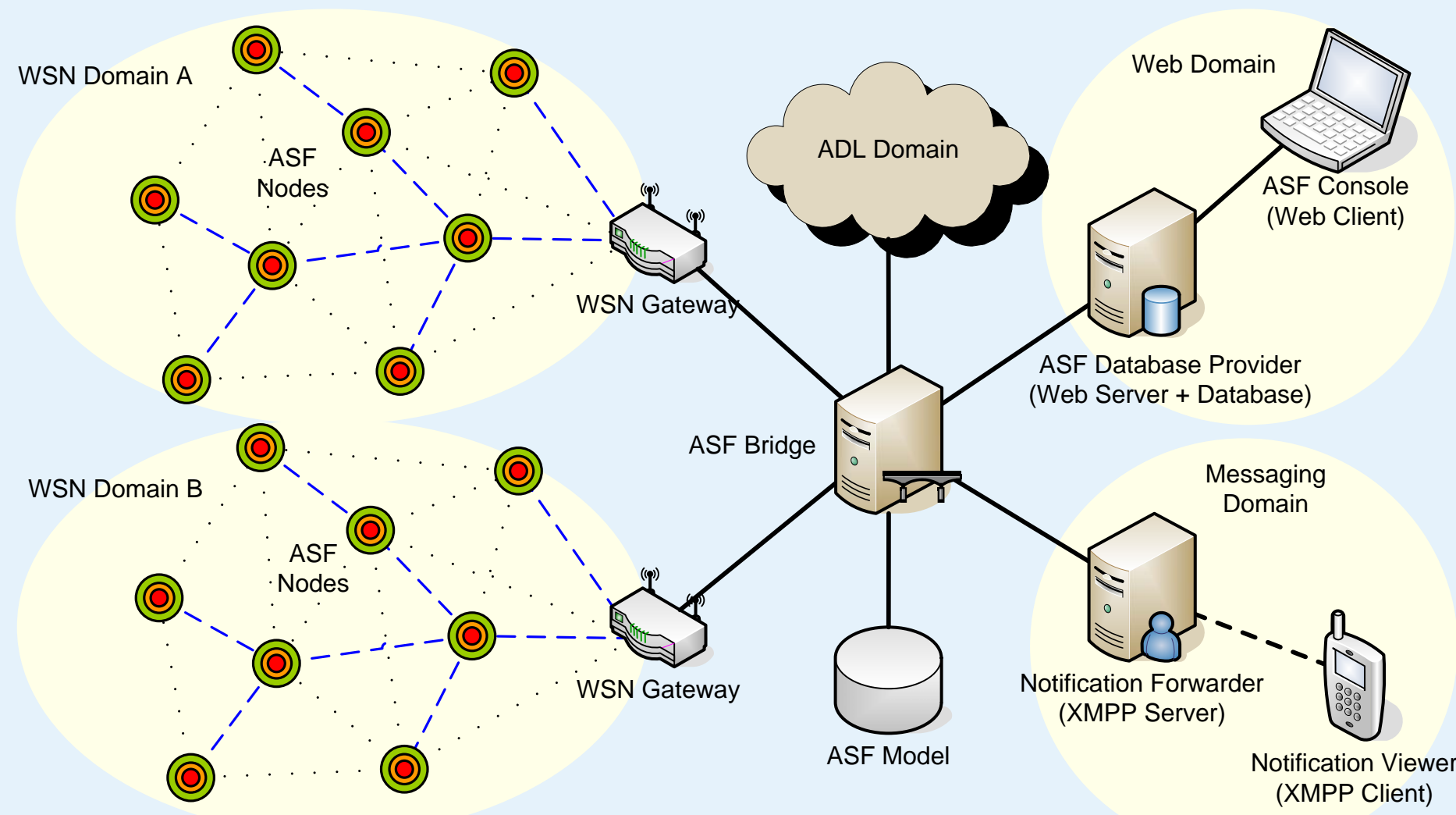


# Model-based Building Automation System

## System Architecture



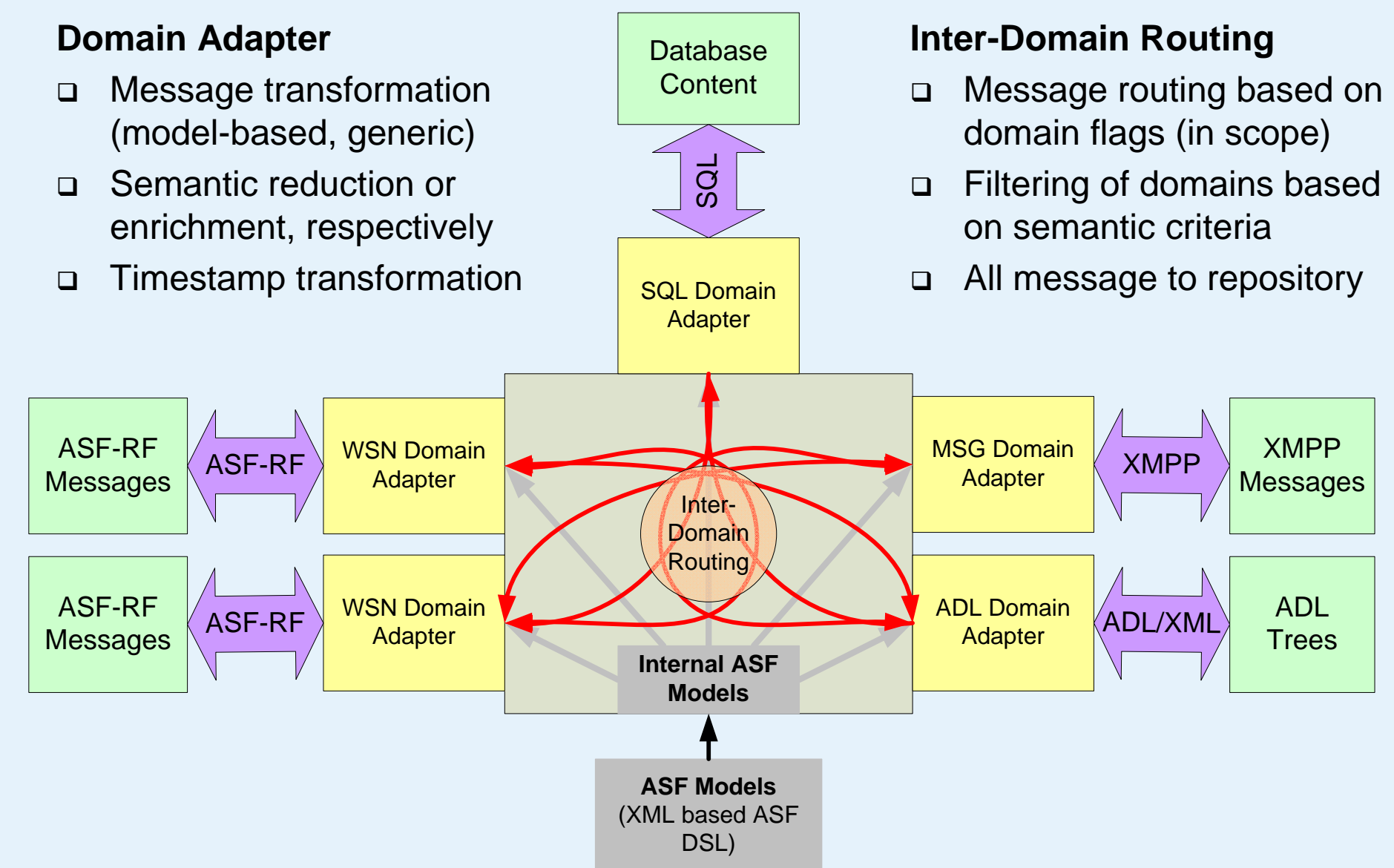
## Model-based Message Bridge

### Domain Adapter

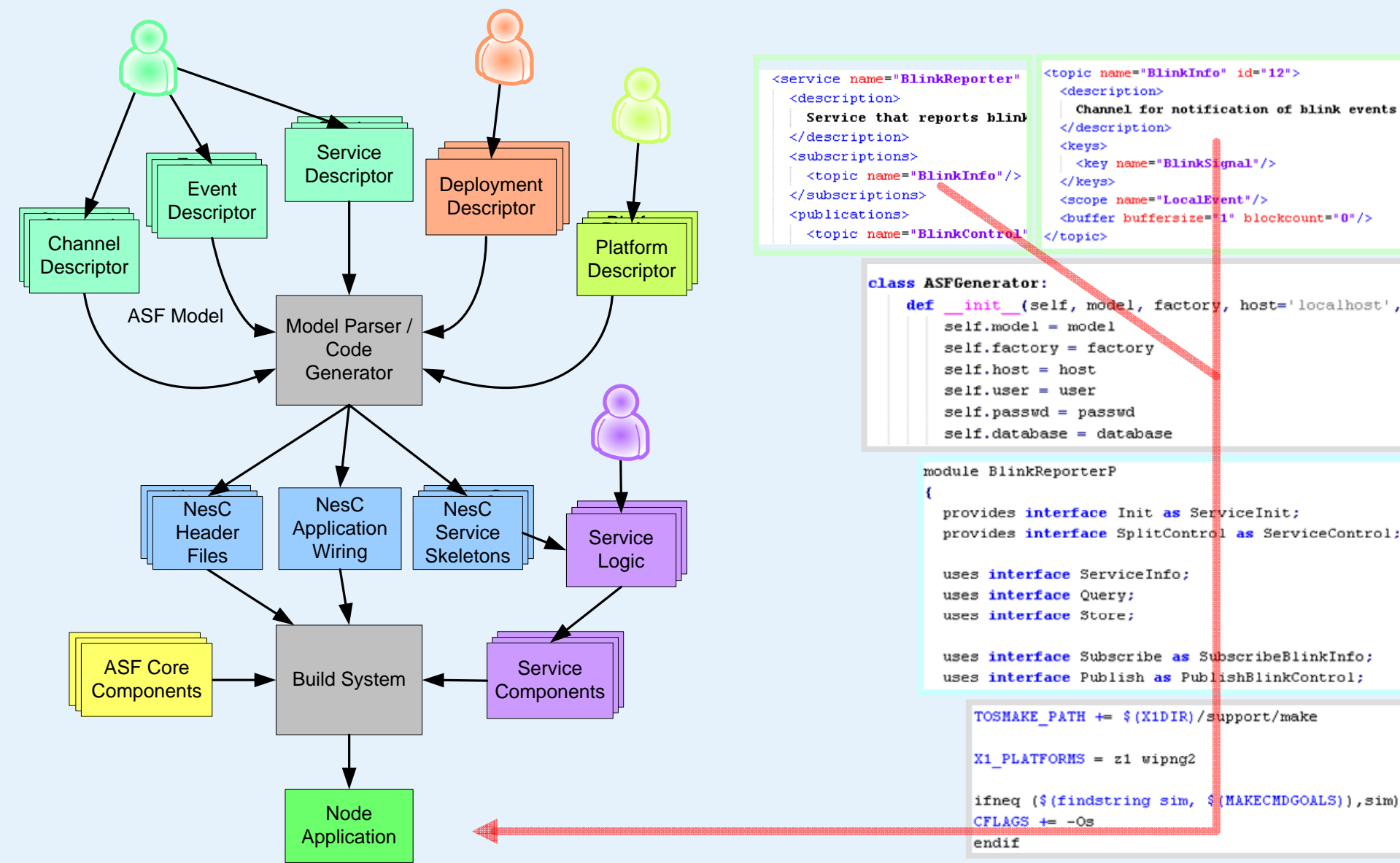
- Message transformation (model-based, generic)
- Semantic reduction or enrichment, respectively
- Timestamp transformation

### Inter-Domain Routing

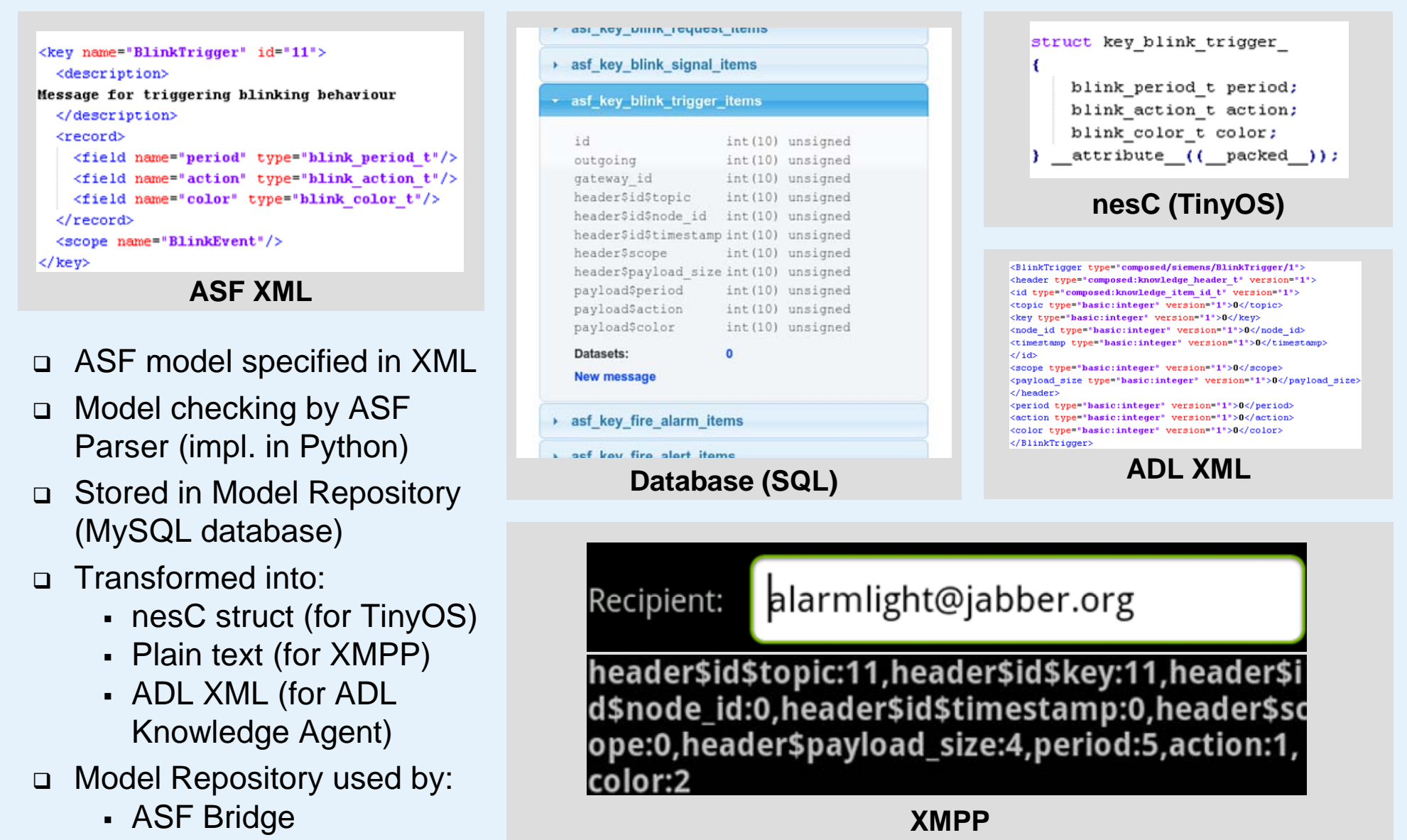
- Message routing based on domain flags (in scope)
- Filtering of domains based on semantic criteria
- All message to repository



## Model-based Code Generation



## Model-based Message Translation



## Demonstrator – Message Reporter



- Web based Viewer for ASF Model Repository
  - Generic Web application for all message types + Timeline
  - Dedicated Web applications based on a generic framework
- Minimization of development and maintenance effort

## Demonstrator – Fire Alarm Application

